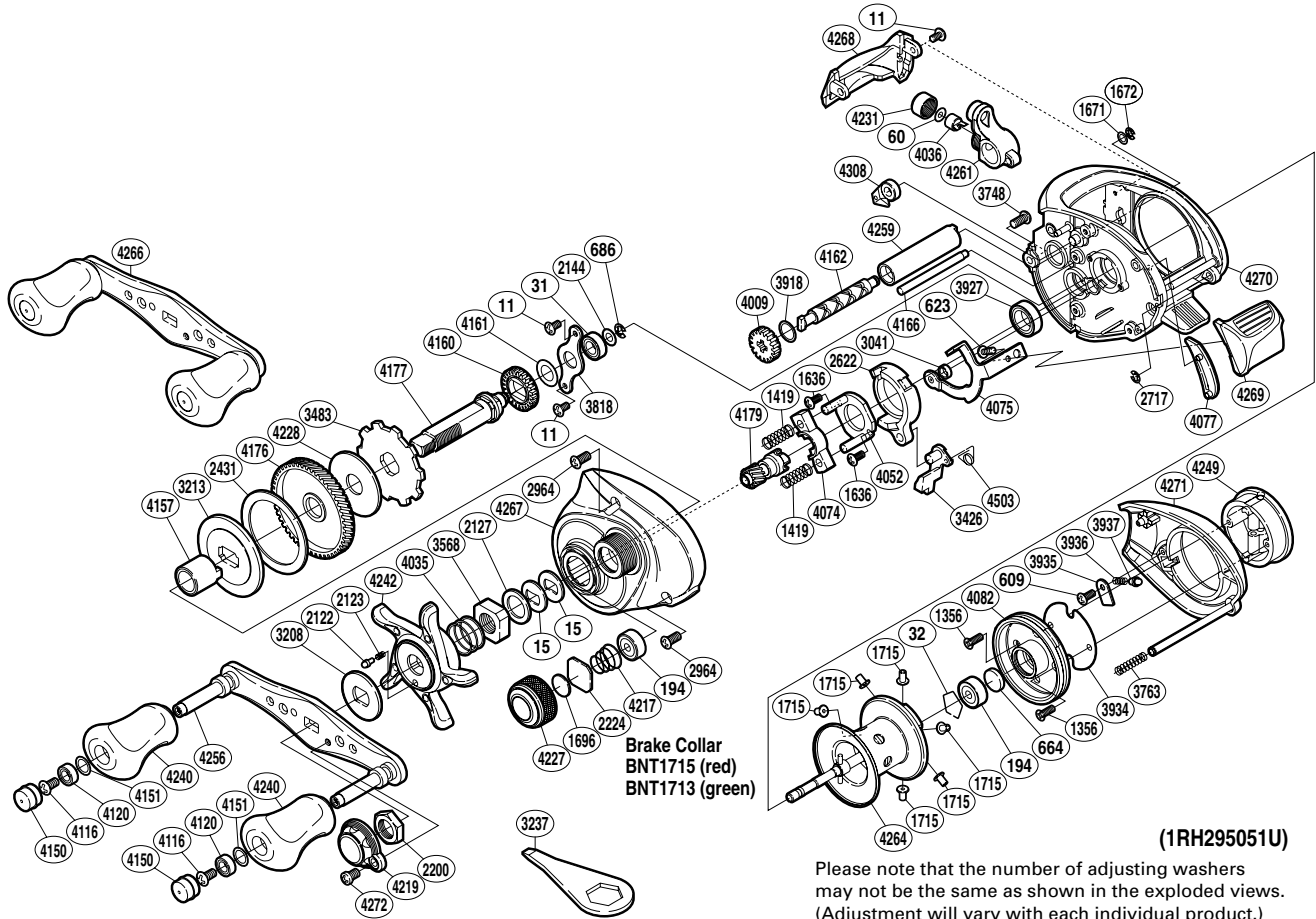


SHIMANO

CHRONARCH SA-RB

CH-51E



Please note that the number of adjusting washers may not be the same as shown in the exploded views. (Adjustment will vary with each individual product.)

| Part No. | Description | Part No. | Description | Part No. | Description |
|----------|----------------------------|----------|--------------------------|----------|----------------------------------|
| BNT0011 | Screw | BNT3213 | Key Washer | BNT4166 | Level Wind Guide |
| BNT0015 | Drag Spring Washer | BNT3426 | Clutch Pawl | BNT4176 | Drive Gear |
| BNT0031 | Ball Bearing | BNT3483 | Anti-Reverse Ratchet | BNT4177 | Drive Shaft |
| BNT0032 | Bearing Retainer | BNT3568 | Star Drag Nut | BNT4179 | Pinion Gear |
| BNT0060 | Spacer | BNT3748 | Screw | BNT4217 | Spool Tension Spring |
| BNT0194 | Ball Bearing | BNT3763 | Side Plate Spring | BNT4219 | Handle Retainer |
| BNT0609 | Screw | BNT3818 | Drive Shaft Retainer | BNT4227 | Cast Control Cap |
| BNT0623 | Screw | BNT3918 | Washer | BNT4228 | Drag Washer |
| BNT0664 | Spacer B | BNT3927 | Ball Bearing | BNT4231 | Pawl Cap |
| BNT0686 | E Lock | BNT3934 | Brake Case Spacer | BNT4240 | Handle Knob |
| BNT1356 | Screw | BNT3935 | Brake Spring Retainer | BNT4242 | Star Drag |
| BNT1419 | Yoke Spring | BNT3936 | Click Spring | BNT4249 | Turnkey Dial |
| BNT1636 | Screw | BNT3937 | Click Pin | BNT4256 | Handle Shank Assembly |
| BNT1671 | Washer | BNT4009 | Idle Gear | BNT4259 | Level Wind Guard |
| BNT1672 | E Lock | BNT4035 | Star Drag Spring | BNT4261 | Line Guide |
| BNT1696 | Cast Control Spacer | BNT4036 | Line Guide Pawl | BNT4264 | Spool Assembly |
| BNT1715 | Brake Collar (red) | BNT4052 | Clutch Cam Retainer | BNT4266 | Handle Assembly |
| BNT2122 | Click Pin | BNT4074 | Yoke | BNT4267 | Left Side Plate |
| BNT2123 | Click Spring | BNT4075 | Clutch Plate | BNT4268 | Level Wind Protector |
| BNT2127 | Star Drag Spacer | BNT4077 | Clutch Bar Guide | BNT4269 | Quick-Fire II Clutch Bar |
| BNT2144 | Washer | BNT4082 | Brake Case | BNT4270 | One-Piece Frame |
| BNT2200 | Handle Nut | BNT4116 | Screw | BNT4271 | Right Side Plate |
| BNT2224 | Spool Tension Spacer | BNT4120 | Ball Bearing | BNT4272 | Screw |
| BNT2431 | Drag Washer | BNT4150 | Handle Knob Seal | BNT4308 | Anti-Reverse Pawl |
| BNT2622 | Clutch Cam | BNT4151 | Washer | BNT4503 | Clutch Pawl Spring |
| BNT2717 | E Lock | BNT4157 | Roller Clutch Inner Tube | | |
| BNT2964 | Screw | BNT4160 | Idle Gear | | |
| BNT3041 | Clutch Plate Shaft Support | BNT4161 | Washer | BNT1713 | Brake Collar (green) (accessory) |
| BNT3208 | Star Drag Click Plate | BNT4162 | Worm Shaft | BNT3237 | Wrench (accessory) |